

Installation Instructions *for the FracCure Aerator*

1. All electrical connections should be made by a licensed electrician.
2. The motor should rotate in a clockwise direction when viewed from above.
3. After the electrical connections are made to the motor (and control box, if any), lay the two pontoons side by side on the ground and place the (reinforcing) stainless steel square tubing into the slots on the pontoons.
4. Insert the motor deck onto the pontoons.
5. After applying *Loctite* to the eye bolt threads, insert the eye bolts through the motor deck and through the holes in the square tubing and bolt down to the pontoons snugly. The eye bolts are used to tie the pontoons to the shore or bank. Do not attempt to pick up the aerator using these pontoon eye bolts!
6. Apply *Loctite* to the eight (3/8-inch x 2¾-inch) hex head bolts and then use these to bolt down the rest of the motor deck to the pontoons using the washers supplied.
7. Place the motor on the motor deck and bolt it down using the large ½-inch motor bolts, large flat washers, lock washers, and *Loctite*.
8. Attach the plastic turbine to the air shaft using the separate instructions that are included.
9. Using a bucket truck or back hoe, lift the pontoon into the air by the ***motor*** eye bolts.
10. Slide the air shaft onto the motor shaft and insert the set-screws into the holes located on motor shaft (located on the opposite side of the keyway). Apply *Loctite* to the set-screw threads before inserting them. Tighten the set-screws snugly.
11. Gently move the aerator over to the lake or lagoon and lower slowly into the water.
12. Never touch or bump the air shaft during any phase of the installation or launching.
13. Never let the air shaft drag on the ground or the bank of the lagoon.
14. Turn on the aerator.
15. There should be very little, if any, vibration in the aerator while it is operating. If the aerator vibrates excessively, turn it off immediately and locate the source of the vibration (such as a loose air shaft).
16. If you are using a VFD control panel, set the rpm to rotate between 1100 and 1450 rpm (never greater than 1450 rpm). Find the rpm setting that provides you the most efficient performance. A good starting point is 1200 rpm.
17. The aerator will perform best if it is allowed to run continuously. Avoid frequent starts and stops since this will shorten the life of the motor.

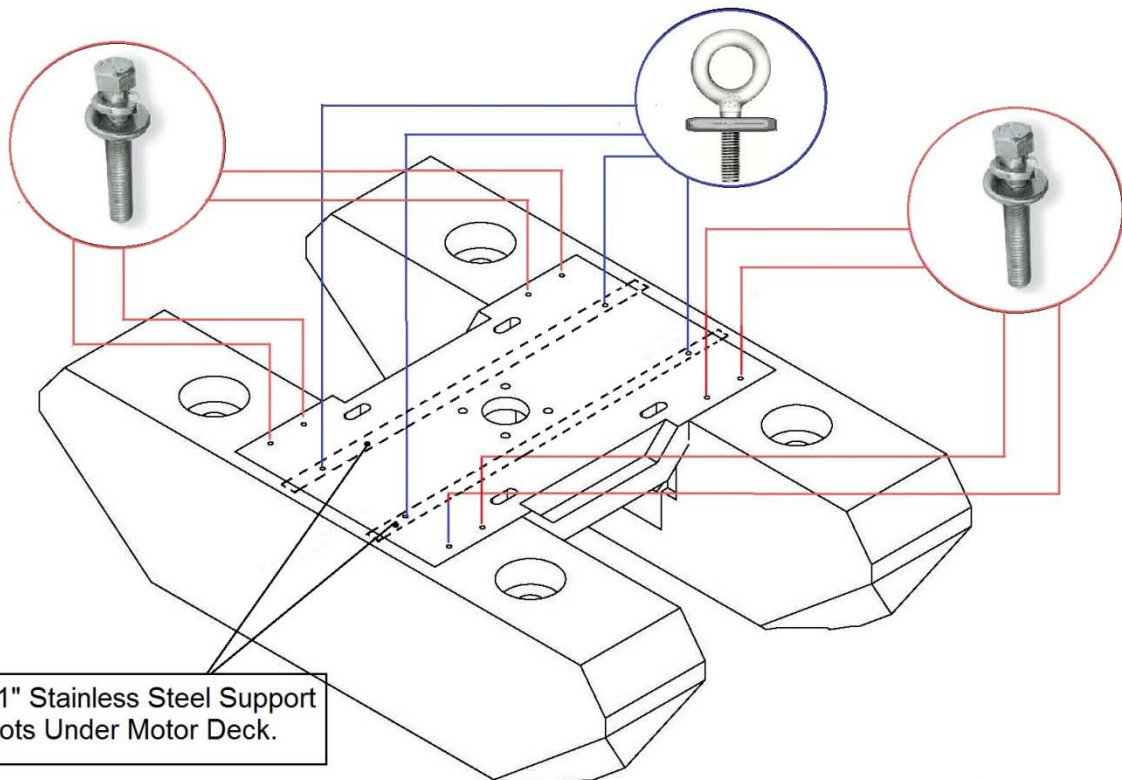
Aeration Pontoon Assembly

Fasteners

8 – 3/8 -16 x 2-3/4" HCS Stainless.
12 - 3/8 x 1" o.d. Flat washers.
12 - 3/8" Lock washers.
4 - 3/8-16 x 3" Eye bolts Stainless.
4 - 3/8-16 Nuts (thread nuts onto
eyebolts then add washer).

4 – 1/2-13 x 2" HCS Stainless Steel
(Motor bolts).
4 – 1/2 x 2" o.d. flat washers.
4 – 1/2" Lock washers.

1. After the electrical connections are made to the motor (and control box, if any), lay the two pontoons side by side on the ground and place the (reinforcing) stainless steel square tubing into the slots on the pontoons.



Turbine Assembly

ATTENTION! Don't use a hammer, just a small screwdriver.

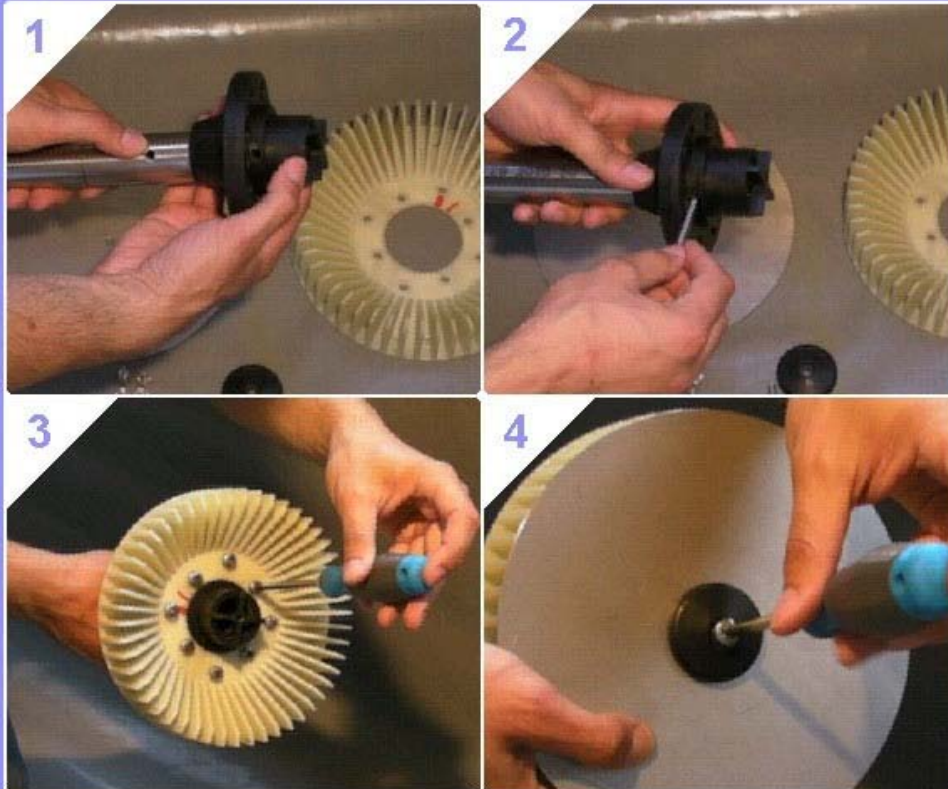


Operating Instructions

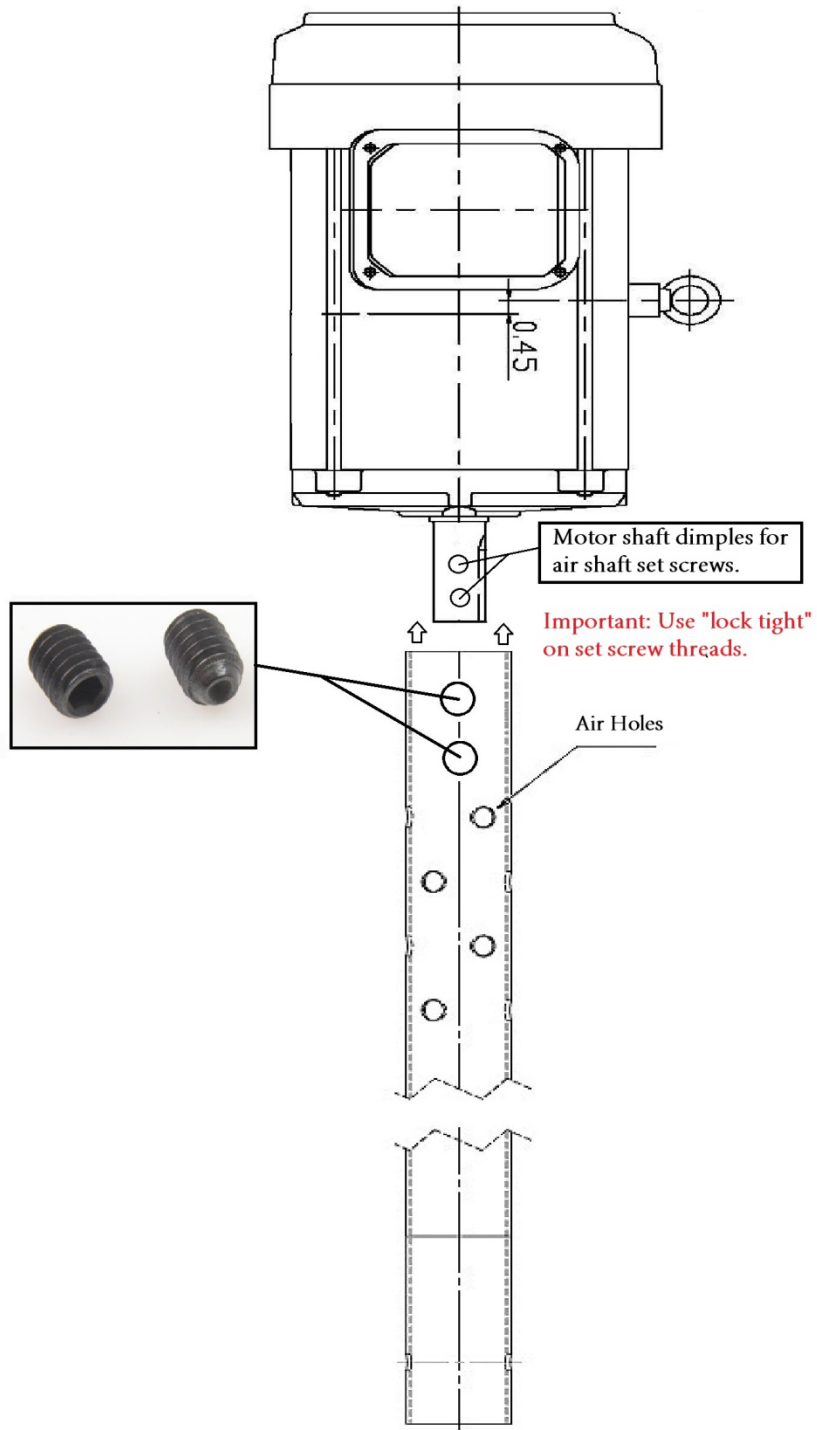
1. The turbine shaft have to enter into axis without effort. The shaft diameter must be 33.7 mm.
2. The safety needle should enter at effortlessly.
4. Do not apply excessive force to tighten the screw in the stainless steel disc.

The turbine is made from a plastic composite reinforced with fiberglass, thanks to this special material this turbine is resistant to acidic than basic substances.

Turbine assembly:

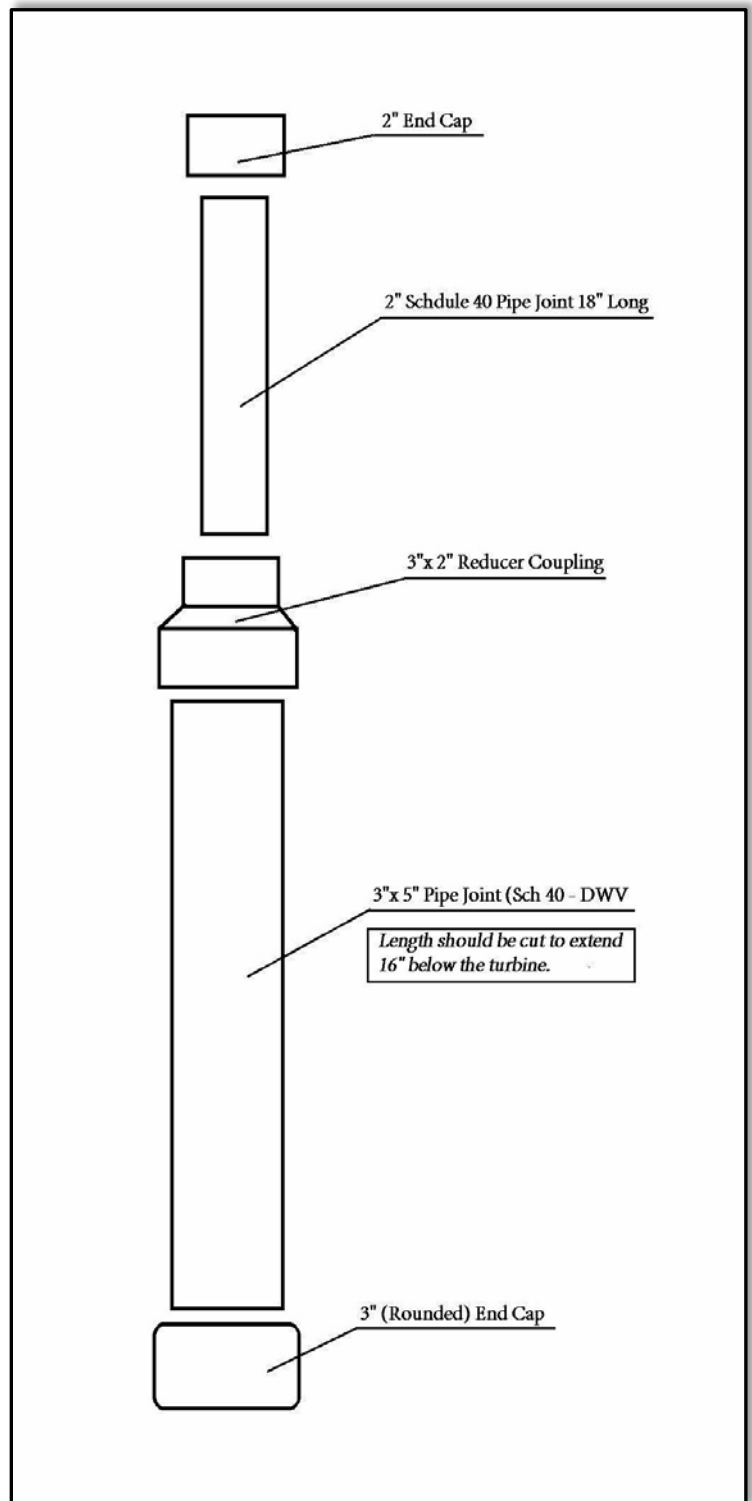


Motor Shaft to Air Shaft Assembly



PVC Legs

- 4 – 3" Pipe joints (Sch. 40) cut to extend 16" to 18" below turbine.
- 4 – 3" x 2" Reducer Coupling.
- 4 – 3" (Rounded) End Caps.
- 4 – 2" End Caps.
- 4 - 2" Sch. 40 Pipe Joints at 18" long each.

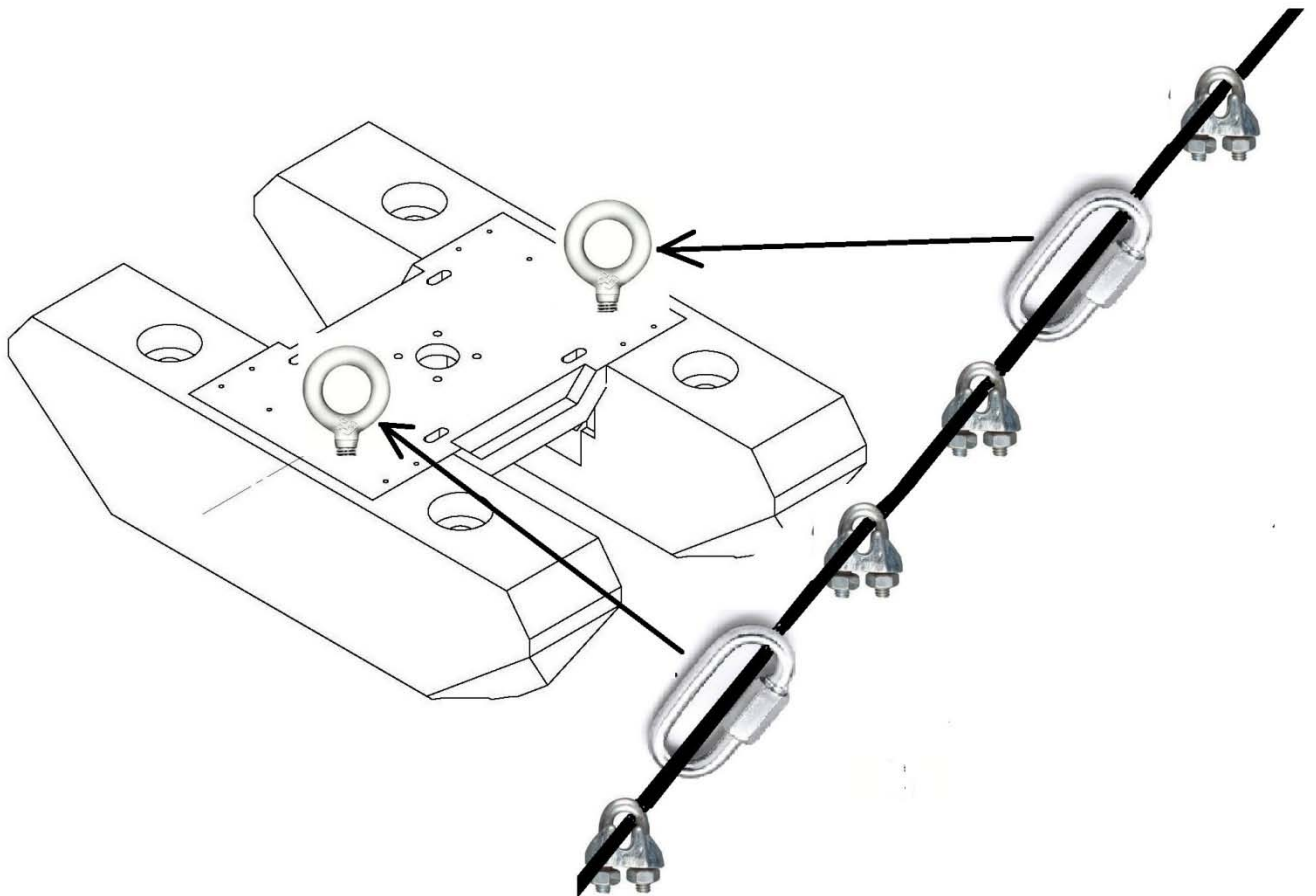


Pontoon Attachment to Cable

4 – 3/16 Cable Clamps

2 – Quick Links

(Use min. 3/16 Stainless Steel Cable)



Secure “quick links” to pontoon eyebolts and cable then place cable clamps on each side of “quick links”.